

PROCEDURETITLE: PLEURX CATHETER DRAINAGE SYSTEM

PURPOSE: To intermittently drain malignant pleural or peritoneal fluid from the body.

LEVEL: ___ Dependent ___ Independent x Interdependent

SUPPORTIVE DATA: The pleurx system allows the patient or caregiver to intermittently drain malignant fluid from the pleural or abdominal cavity in a home environment/hospital via an individual catheter and a drainage system.

EQUIPMENT LIST: Pouched plastic vacuum bottle
Procedure pack that includes

- gauze pads (4X4)
- foam catheter pad
- valve cap
- gloves (1 pair)
- self adhesive dressing
- CSR wrap
- Slide clamp

CONTENT:

STEPSKEY POINTS

1. Obtain order for frequency of drainage
2. Explain procedure to patient.
3. Remove dressing from over catheter and discard.
4. Open procedure pouch.
5. Open vacuum bottle and drainage line pouch. Place bottle next to sterile wrapping and place end of drainage line on sterile field.
6. Apply sterile gloves from procedure kit.
7. Open alcohol swabs and place them on sterile field.
8. Open valve cap packet and place cap on sterile field.

1. The frequency of drainage depends on the amount of drainage and physician order.
2. Patient and/or caregiver will understand and be able to perform the procedure.

9. Clamp the drainage line completely closed.
Note: clamp must be fully closed on the drainage line or vacuum in the bottle may be lost.
 10. With drainage line in sterile hand, remove tip cover with the non dominant hand.
 11. Place tip of catheter back on the sterile field.
 12. Remove the plunger guard and press white plunger through the foil vacuum seal.
 13. Grasp the catheter valve with non-dominant hand and remove cap.
 14. Hold valve and wipe around external surfaces of opening with alcohol pad.
 15. While holding valve, pick up drainage line and insert tip of drainage line into catheter valve. Click will be heard and felt when locked together.
 16. Release the clamp on drainage line. Fluid will flow into vacuum bottle. If patient experiences pain when draining, clamp tube to stop or slow drainage for a few moments
 17. **In pleural placement, never drain more than 1000cc total at one time. In peritoneal placement, never drain more than 2000cc total at one time.**
 18. When drainage is completed, hold drainage line in one hand and catheter in other hand – pull apart in one firm smooth motion.
 19. Wipe valve with alcohol swab.
 20. Place new cap over catheter valve and twist clockwise until it snaps into position.
9. This is a single use drainage system, if vacuum is lost a new container must be used.
12. Removal of the plunger guard allows activation of the drainage system.
16. Pain is sometimes felt when fluid is evacuated from the pleural space.
17. Drainage is limited to prevent adverse reaction to excessive fluid drainage.

CONTENT CONT'D:

21. Clean around catheter with swab
22. Place foam catheter pad around catheter.
23. Wind catheter into a loop and place over the foam pad. **23-25**
24. Cover the catheter with gauze pads. Apply a transparent dressing; protects entry site from contamination when not in use.
25. Apply transparent dressing over the area.
26. Dispose of all soiled equipment in appropriate waste receptacle

DOCUMENTATION:

Document the following:

1. procedure in Nurses' Notes
2. amount, color and character of the drainage in Nurses' Notes
3. patient's reaction to procedure in Nurses' Notes
4. patient education on Interdisciplinary Care Plan Teaching Record
5. Volume of drainage in I & O Flowsheet.

REFERENCES:

Denver Biomedical Products 2007



Drainage Instructions

This Poster is to be used only as a reference. Read the *Instructions for Use* that come with the drainage kits and watch the *Drainage Video* for detailed instructions.

GETTING STARTED: *Get everything ready and thoroughly wash your hands.*

1. Open all packaging. Unfold the blue wrapping. Place the bottle near the wrapping and lay the access tip on the blue wrapping.



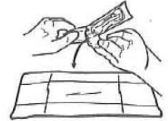
2. Tear open the alcohol pads and lay them on the blue wrapping a short distance from the sterile items.



3. Pick up each glove by the wrist and put both of them on.

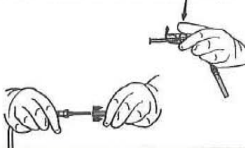


4. Open the pouch containing the valve cap and let it fall onto the sterile blue wrapping.

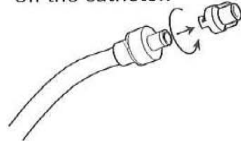


CONNECTING THE DRAINAGE BOTTLE: *Be sure to keep the end of the catheter and access tip clean.*

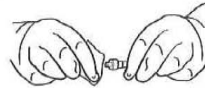
5. Squeeze the clamp on the drainage line completely closed, and remove the cover from the access tip.



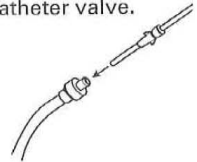
6. Take the valve cap off the catheter.



7. Clean around the valve opening with an alcohol pad.



8. Insert the access tip into the catheter valve.



DRAINING FLUID: *Do not drain more than 1,000 ml from your chest or 2,000 ml from your abdomen at any one time.*

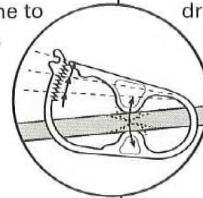
9. Remove the support clip from the top of the drainage bottle.



10. Push down the "T" plunger.



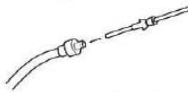
11. Release the clamp on the drainage line to begin draining.



12. Squeeze the clamp on the drainage line completely closed when finished draining.

FINAL STEPS: *If you have any questions or concerns, contact your nurse or doctor.*

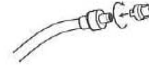
13. Pull the access tip out of the valve; set the drainage line down.



14. Clean around the valve opening with an alcohol pad.



15. Place the new cap on the catheter valve and twist it into its locked position.



16. Clean around the catheter site with an alcohol pad.



17. Place the foam catheter pad around the catheter and wind the catheter on top of the pad. Cover the catheter with gauze pads.



18. Place the self adhesive dressing over the gauze pads, and remove the plastic covering.



19. Remove the flexible cap and drainage line from the bottle.



20. Empty the bottle into the toilet or sink. Then discard the bottle.



14998 W. 6th Ave., Bldg. E 700
 Golden, CO 80401-5025 USA
 Telephone: (800) 824-8454 / (303) 279-7500
 Fax: (866) 838-3739 / (303) 279-7575
 E-mail: dbi-info@denverbio.com
 Website: www.denverbiomedical.com

*U.S. Patent No. 5,484,401

Denver® and Pleurx® are registered trademarks of Denver Biomedical, Inc.